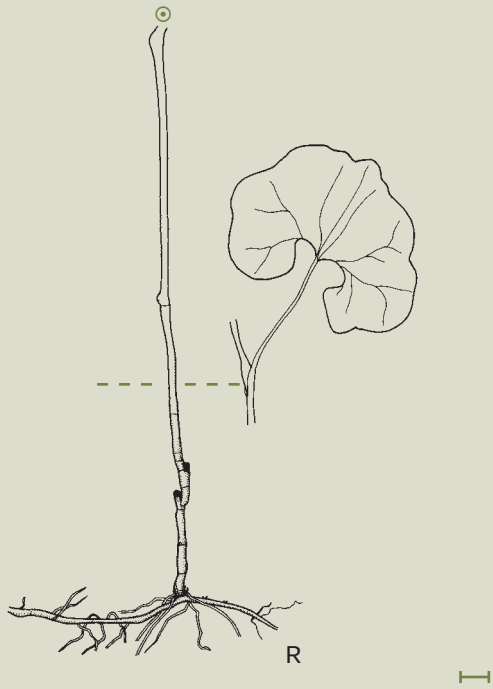


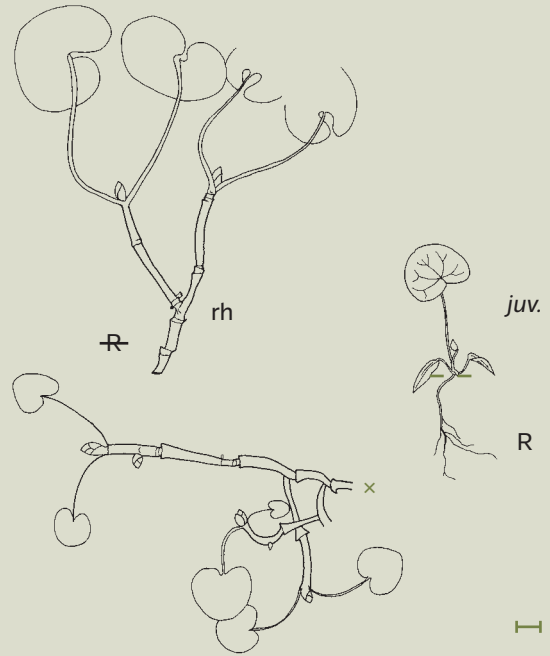
Aristolochia clematitis

Growth form: Clonal, Primary root, Monocyclic, Branching: Sympodial, CGO type: Root, Root sprouting: Spontaneous, Arch 4



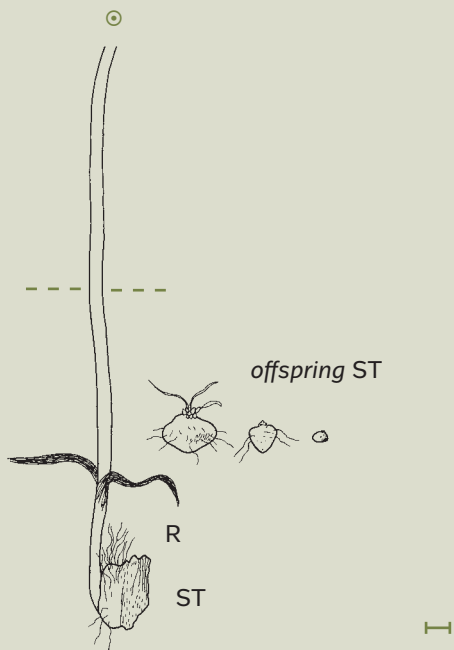
Asarum europaeum

Growth form: Clonal, Adventitious roots, Polycyclic, Branching: Sympodial, CGO type: Epigeogenous rhizome, Arch 3



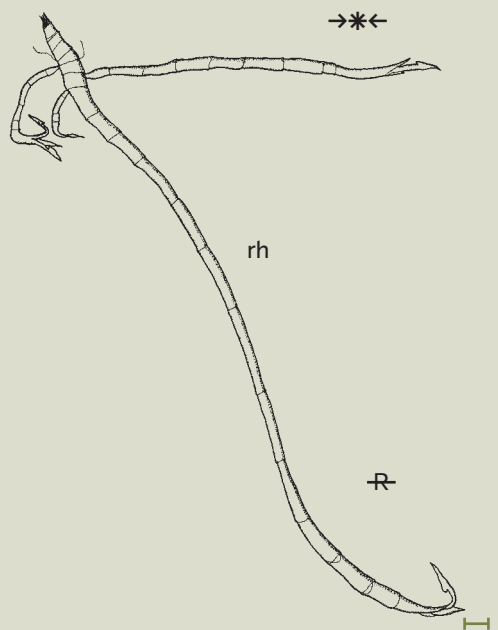
Arum cylindraceum

Growth form: Clonal, Adventitious roots, Monocyclic, Branching: Sympodial, CGO type: Stem tuber, Arch 3



Calla palustris

Growth form: Clonal, Adventitious roots, Polycyclic, Branching: Sympodial CGO type: Epigeogenous rhizome, Arch 3



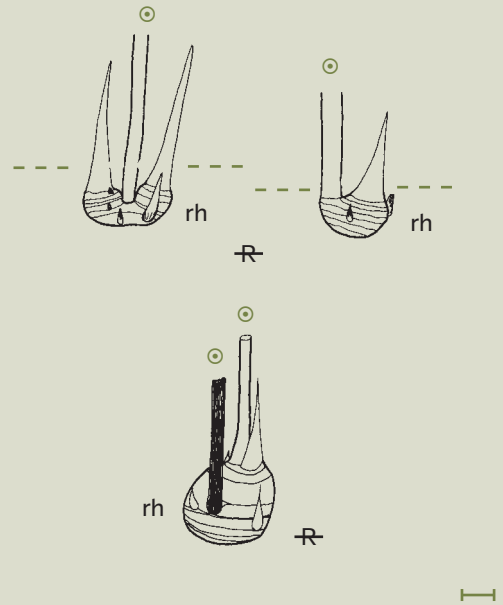
Alisma lanceolatum

Growth form: Clonal, Adventitious roots, Monocyclic, Branching: Sympodial, CGO type: Epigeogenous rhizome, Arch 3



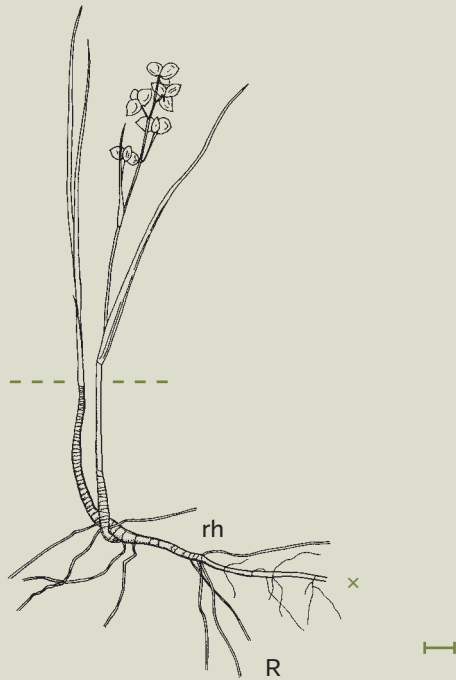
Alisma plantago-aquatica

Growth form: Clonal, Adventitious roots, Monocyclic, Branching: Sympodial, CGO type: Epigeogenous rhizome, Arch 3



Scheuchzeria palustris

Growth form: Clonal, Adventitious roots, Polycyclic, Branching: Sympodial, CGO type: Epigeogenous rhizome, Arch 3



Triglochin maritima

Growth form: Clonal, Adventitious roots, Monocyclic, Branching: Sympodial, CGO type: Epigeogenous rhizome, Arch 3



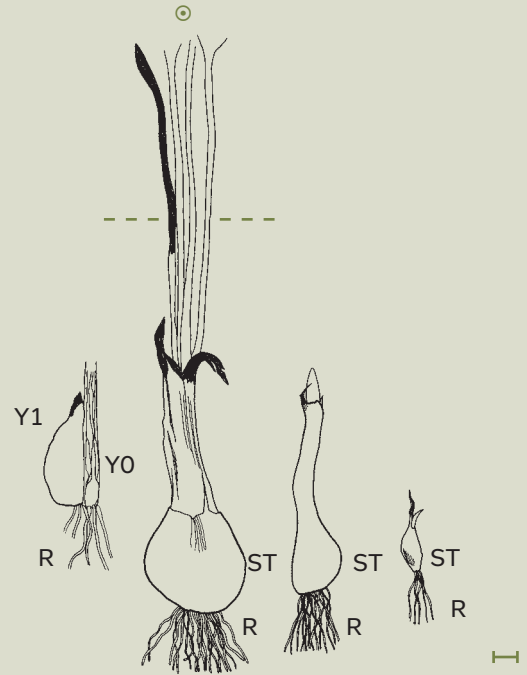
Triglochin palustris

Growth form: Clonal, Adventitious roots, Polycyclic, Branching: Sympodial, CGO type: Epigeogenous rhizome, Arch 3



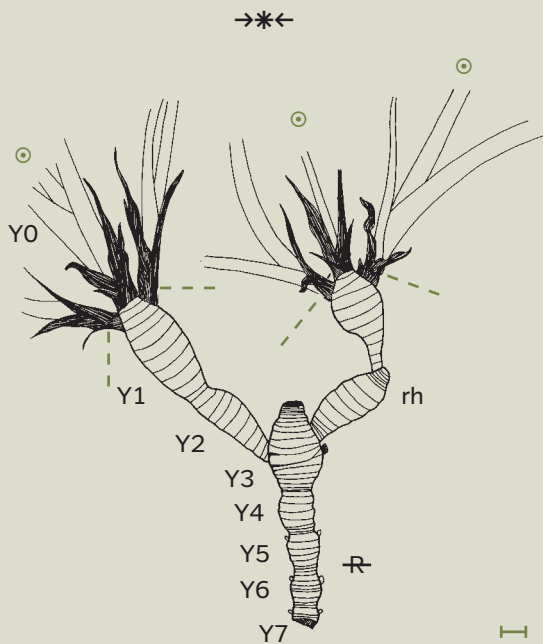
Colchicum autumnale

Growth form: Clonal, Adventitious roots, Polycyclic, Branching: Sympodial, CGO type: Stem tuber, Arch 3



Iris variegata

Growth form: Clonal, Adventitious roots, Polycyclic, Branching: Sympodial, CGO type: Epigeogenous rhizome, Arch 3



Asphodelus albus

Growth form: Clonal, Adventitious roots, Monocyclic, Branching: Sympodial, CGO type: Epigeogenous rhizome, Arch 3

